

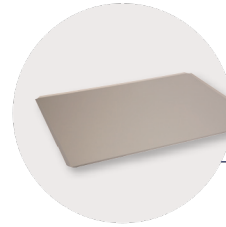


DUMMY /
REFERENCE
BAG

(Shown with
sensor & cable)



TRANSPORT
CARRIER



TRANSPORT
TRAY



BARCODE
READER

Equipment Standard & optional

	CSF61 L	CSF101 L
B Medical Systems Electronics 7" full touchscreen display	●	●
Internal LED lighting	●	●
GMP - Clean room classification	● A / ISO 5 ○ B / ISO 6	● A / ISO 5 ○ B / ISO 6
°B Connected - Monitoring Software	○	○
Ethernet interface / interface card	●	●
Ambient temperature sensor	●	●
Potential-free contact in case of system failure	●	●
Eco-mode (interim storage temperature of -37°C)	●	●
Dummy / reference bag port for accompanying core temperature readings during the freezing process	● 2	● 2
Dummy / reference bag with sensor & cable	○	○
Dummy / reference bag	○ 500ml	○ 500ml
Transport carrier tray	○ 1 ○ 4 (recommended)	○ 1 ○ 4 (recommended)
Barcode reader	○	○
Condenser filter	●	●
Integrated air-cooled condenser	●	●
Water cooling	○ ● CSF61 W (water-cooled version)	○ ● CSF101 W (water-cooled version)
Air-cooled condenser & compressor as external unit (1080 x 1350 x 965 mm)	○ ● CSF61 S (split version)	○ ● CSF101 S (split version)
Securing feet for models with condenser & compressor as external unit	○	○
Smooth castors with stabilizers	●	●
Wooden packaging for ocean transport / export	●	●



EXTERNAL
AIR COOLING
SYSTEM

INSTALLATION INSTRUCTIONS

The installation costs for units with an external air cooling system or water-cooled system are not included in the unit price (standard version: CSF61-101 L). These costs are subject to an individual client request and can vary depending on the conditions in the designated building. CSF models are installed as a free-standing, air-cooled unit ready for connection.

On request the CSF models can also be equipped with the following cooling systems:

- External air cooling system (CSF61-101 S models)
- Water cooling system (CSF61-101 W models)
 - Directly connected to the in-house water system
 - Connected to a separate closed air-conditioning system, also called "A/C water cooling system"
 - Connected to a separate closed water circuit, also called "refrigerated water tower"

● Standard ○ Optional - Not available